



# JETSTAR

## INSHORE UTILITY / DIVE SUPPORT VESSEL

### SPECIFICATIONS

#### Vessel

Type: Aluminium Catamaran  
Built: Calibre Marine 2009  
Survey: 1E 16 + 2, 2C 12 + 2  
Aust Reg No: 859 582



#### Dimensions

Length overall: 11 m  
Beam: 4.0 m  
Depth: 1.37 m  
Draft: 0.5 m  
Clear deck: 5 x 4 m

#### Machinery

Main engines: 2 x Cummins QSC  
8.3 ltr 500 hp  
Drive: 2 x Doen DJ130 Jets  
Genset: Cummins Onan 7 kva

#### Speed and Consumptions

Top: 22 kts @ 200 ltrs/hr  
Cruise: 18 kts @ 130 ltrs/hr  
Economy: 12 kts @ 65 ltrs/hr

#### Capacities

Fuel: 2600 ltrs  
Water: 250 ltrs  
Sullage: 125 ltrs  
Cargo: 2 tonne

#### Deck Equipment

Tow bollard  
Full deck canopy  
Seating  
Boarding platform bow & stern

#### Bridge Equipment

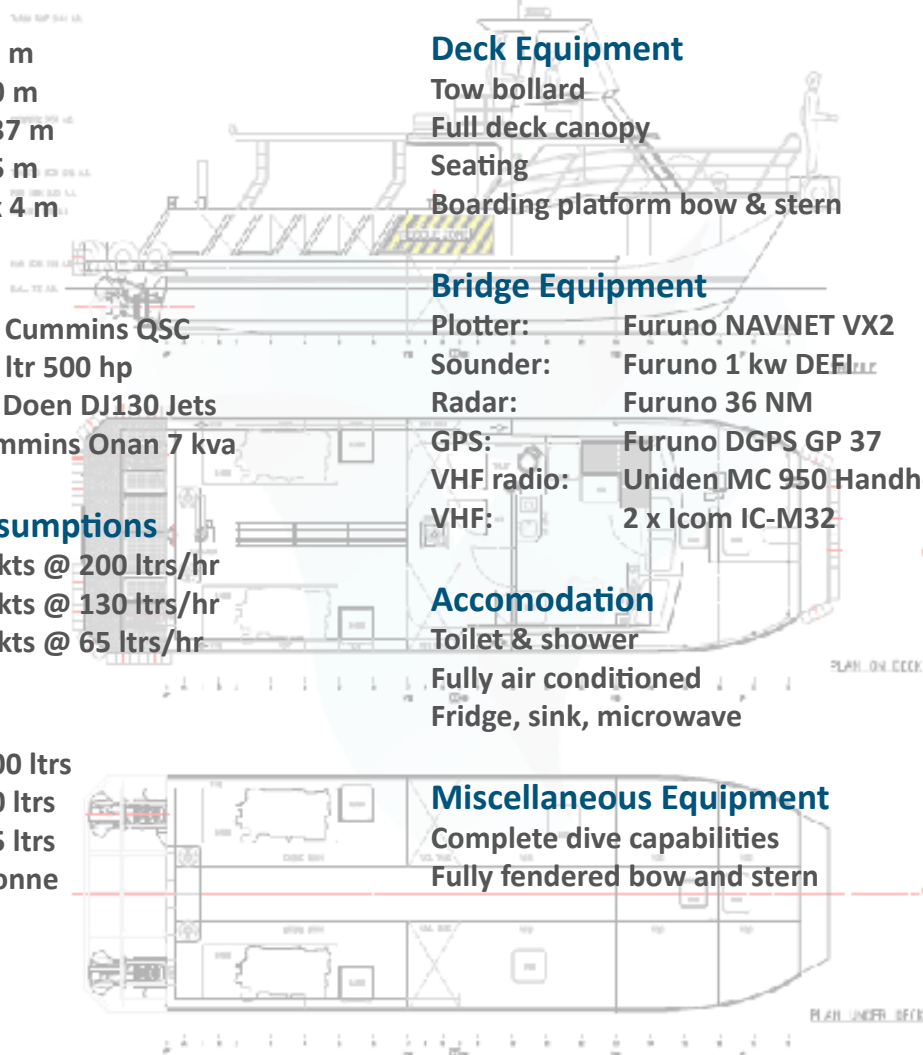
Plotter: Furuno NAVNET VX2  
Sounder: Furuno 1 kw DEFLUX  
Radar: Furuno 36 NM  
GPS: Furuno DGPS GP 37  
VHF radio: Uniden MC 950 Handheld  
VHF: 2 x Icom IC-M32

#### Accomodation

Toilet & shower  
Fully air conditioned  
Fridge, sink, microwave

#### Miscellaneous Equipment

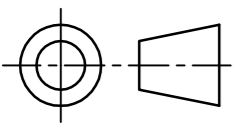
Complete dive capabilities  
Fully fendered bow and stern



Enquiries: [admin@tayloredoffshore.com.au](mailto:admin@tayloredoffshore.com.au)

PH: +61 7 4035 6510

[www.tayloredoffshore.com.au](http://www.tayloredoffshore.com.au)



DO NOT SCALE OFF THIS DRAWING  
ALL DIMENSIONS ARE IN mm  
REMOVE ALL BURRS & SHARP EDGES  
IF IN DOUBT ALWAYS "ASK"

ISSUE	MODIFICATION/REFERENCE	DATE
A		1.7.2013

TARGA ROOF 5440 A.B.

FLYBRIDGE 3450 A.B.

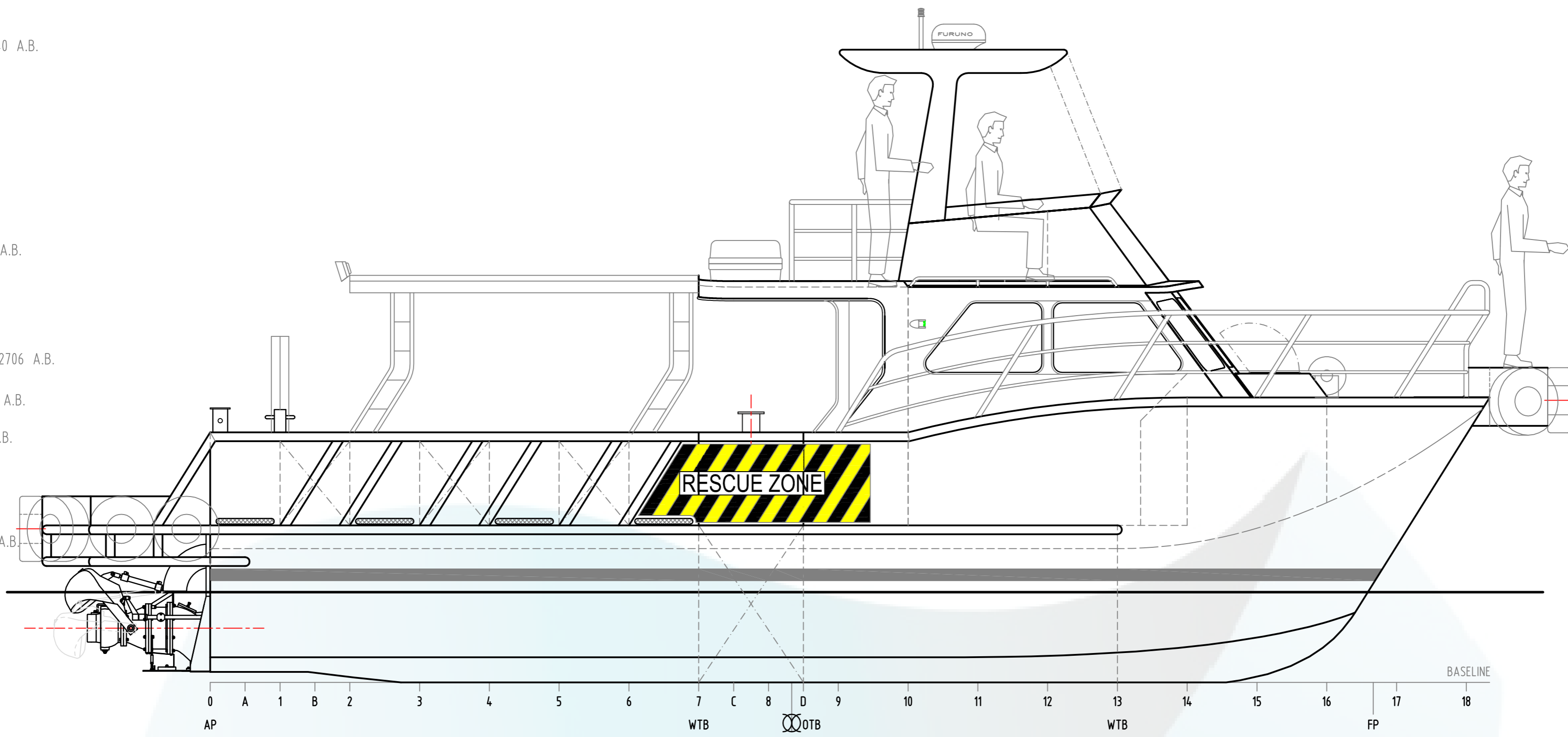
TRANSFER DECK 2706 A.B.

FORE DECK 2450 A.B.

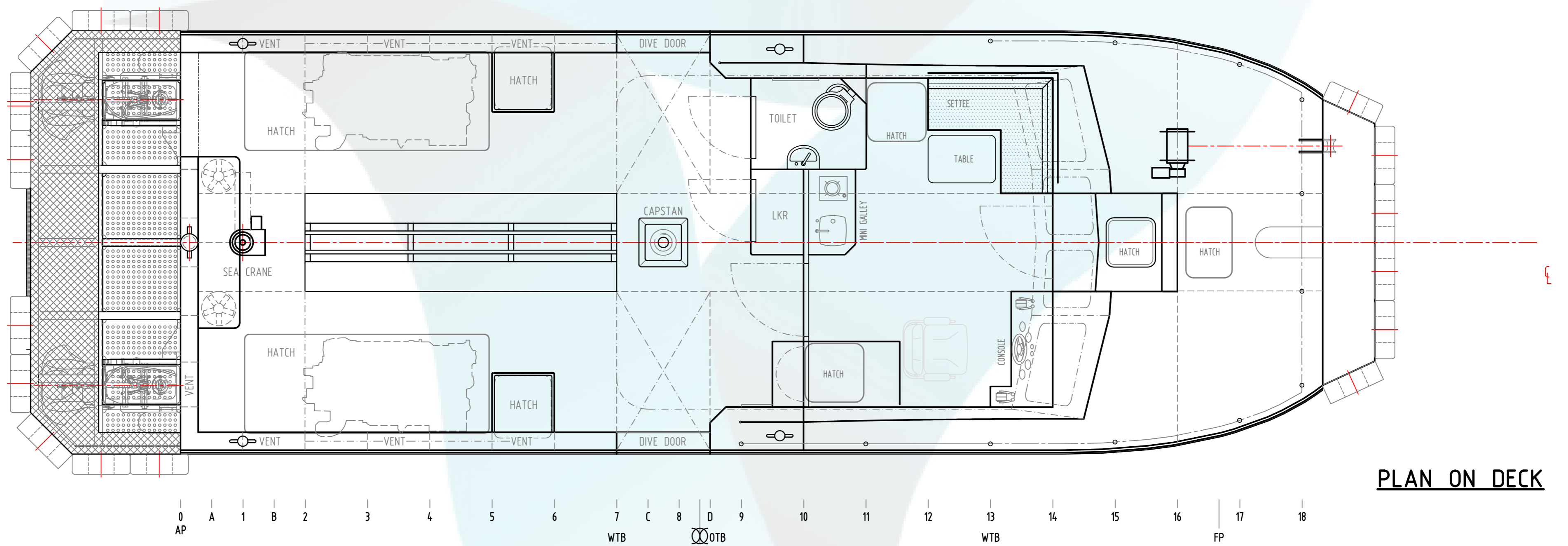
GUNWALE 2150 A.B.

MAIN DECK 1150 A.B.

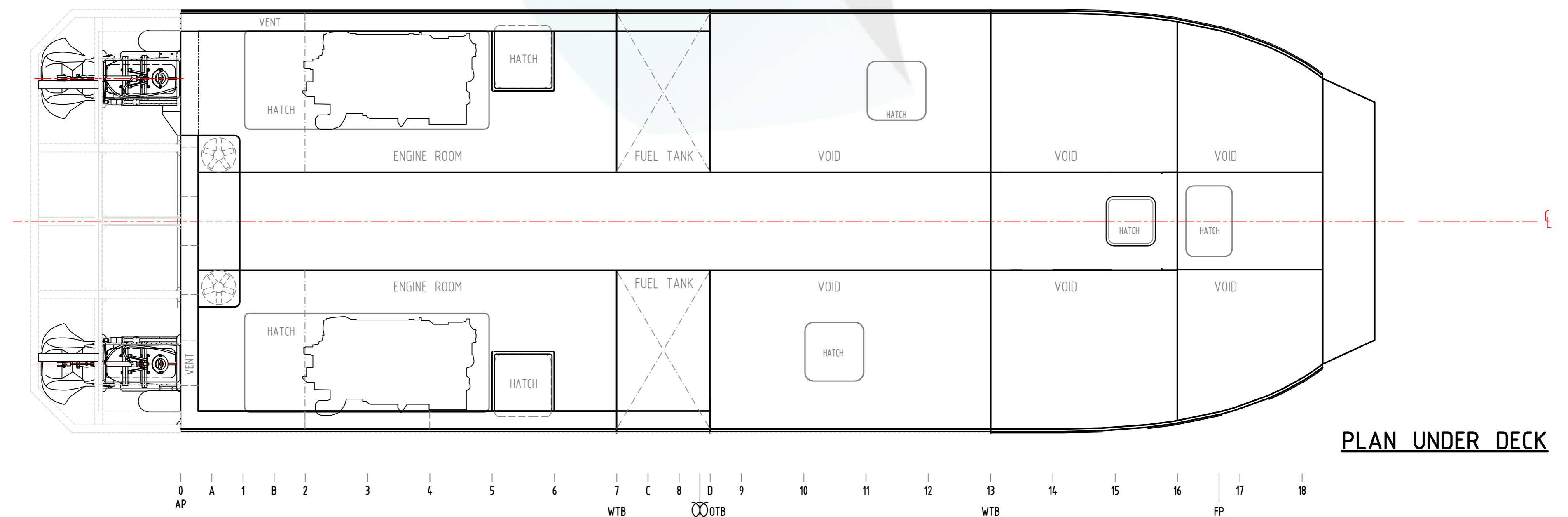
D.W.L. 775 A.B.



**PROFILE**




**PLAN ON DECK**



**PLAN UNDER DECK**

**PRINCIPAL PARTICULARS**

LENGTH (OA)	12.00 M	MAIN ENGINES	TWIN CUMMINS QSC 8.3LTR 500HP
LENGTH (MEASURED)	11.00 M	PROPULSION	DOEN DJ130Z
BEAM (MAX)	4.10 M	TRANSMISSIONS	ZF 280-1 1.214:1
DEPTH (MOULDED)	2.00 M	DESIGN SPEED	30 KNOTS (MAX)
DRAFT (DESIGN)	0.775 M	FUEL CAPACITY	2 X 1000 LITRES
DISPLACEMENT (DESIGN)	15.22 TONNES	CLASS	2C(12+2)/1E(16+2)

Customer <b>TAYLORED OFFSHORE SERVICES</b>	 <small>GENERAL ARCHITECTS, SHIPWRIGHT CONSULTANTS</small>	<small>18-20 SHIPWRIGHT ROAD LARGS NORTH SA 5014 PH: +61 8 8242 0336 FAX: +61 8 8242 0335 ENQUIRIES@OCEANTECH.COM.AU WWW.OCEANTECH.COM.AU</small>	
Project <b>11.00M OFFSHORE UTILITY VESSEL</b>		General Tolerances LIN. ANG.	DRN. JCK Scale 1:30
Title <b>JETSTAR GENERAL ARRANGEMENT</b>	<small>This drawing and all the information contained herein is the property of Oceantech Design. It must not be copied or reproduced in any form or for manufacture or any other purpose without written permission from Oceantech Design and must be returned on demand.</small>		Issue <b>A</b>