



DEEPSTAR

LIVE ABOARD UTILITY / DIVE SUPPORT VESSEL

SPECIFICATIONS

Vessel

Type: Aluminium Catamaran
Built: Cairns Custom Craft 1999
Survey: 1B 23+2, 2B 12+2
Aust Reg No: 856 414

Dimensions

Length overall: 17.34 m
Beam: 5.4 m
Depth: 1.78 m
Draft: 1.0 m

Machinery

Main engine: 2 x Yanmar 6LYZA 440 hp
Drive: 2 x shaft & propeller
Genset: 1 x 12 kva
Genset: 1 x 20 kva 3 phase

Speed and Consumptions

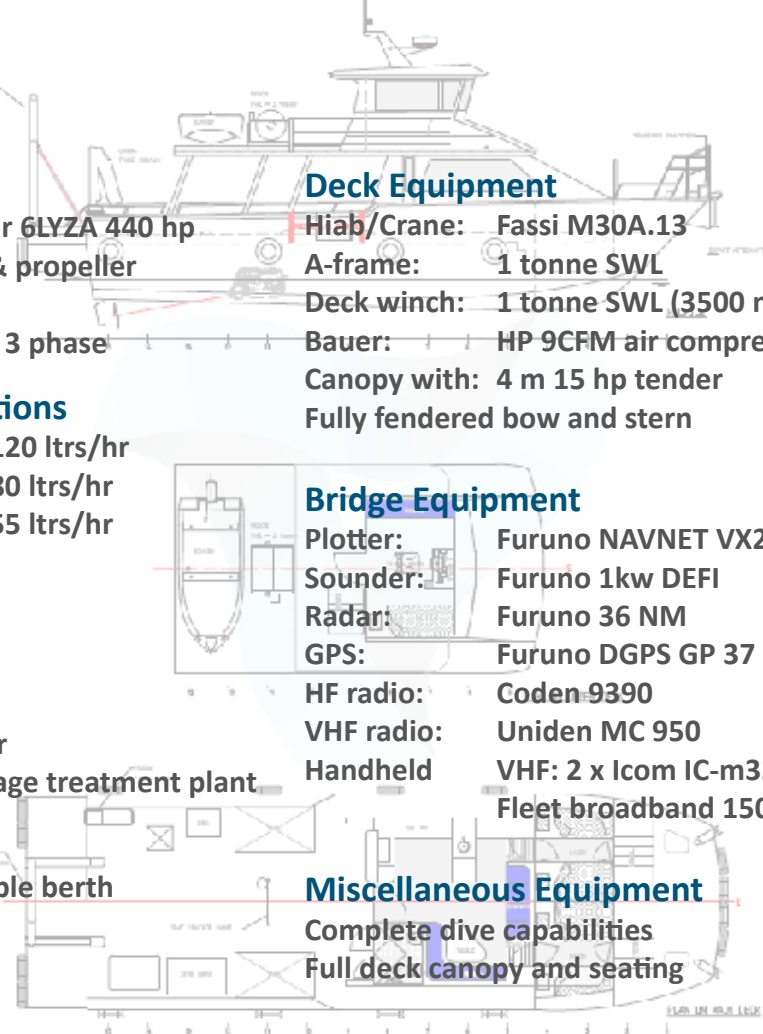
Top: 14 kts @ 120 ltrs/hr
Cruise: 12 kts @ 80 ltrs/hr
Economy: 10 kts @ 55 ltrs/hr

Capacities

Fuel: 3200 ltrs
Water: 300 ltrs
Sullage tank: 500 ltrs
Desal plant: 120 ltrs/hr
MARPOL complaint sewage treatment plant

Accommodation

5 x single berth, 2 x Double berth
Fully air conditioned
Fully equipped galley



Deck Equipment

Hiab/Crane: Fassi M30A.13
A-frame: 1 tonne SWL
Deck winch: 1 tonne SWL (3500 m x 12 mm)
Bauer: HP 9CFM air compressor
Canopy with: 4 m 15 hp tender
Fully fendered bow and stern

Bridge Equipment

Plotter: Furuno NAVNET VX2
Sounder: Furuno 1kw DEFI
Radar: Furuno 36 NM
GPS: Furuno DGPS GP 37
HF radio: Coden-9390
VHF radio: Uniden MC 950
Handheld VHF: 2 x Icom IC-m32
Fleet broadband 150

Miscellaneous Equipment

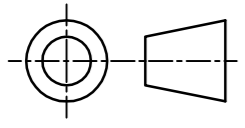
Complete dive capabilities
Full deck canopy and seating

Enquiries:

admin@tayloredoffshore.com.au

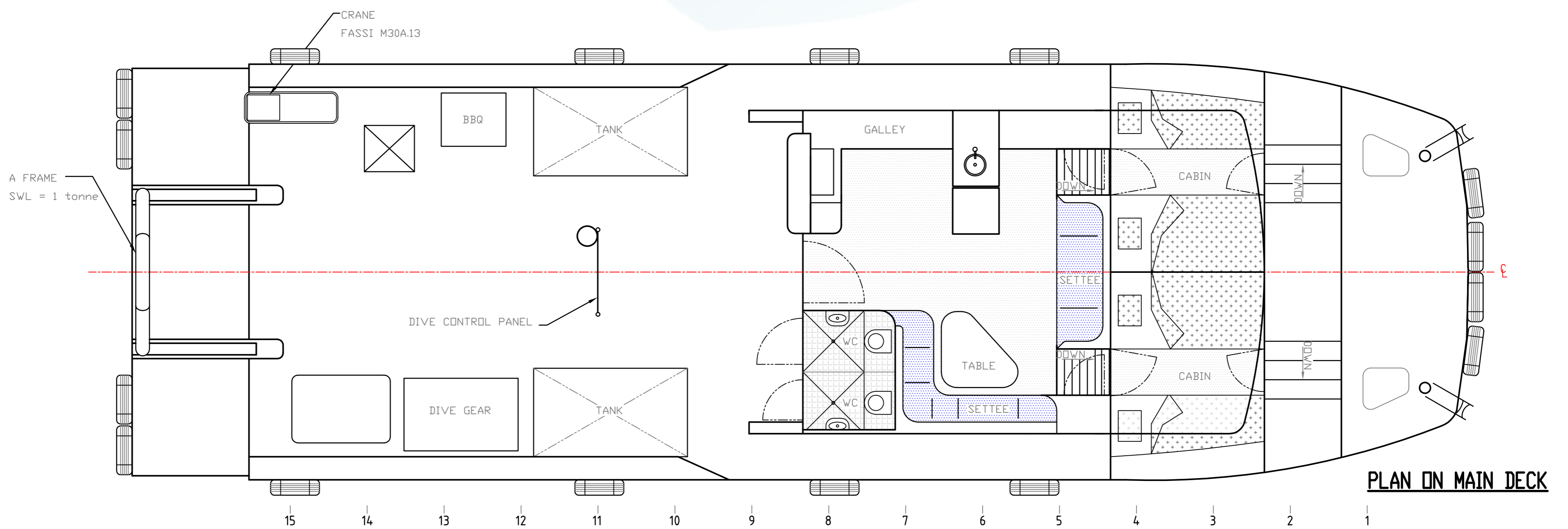
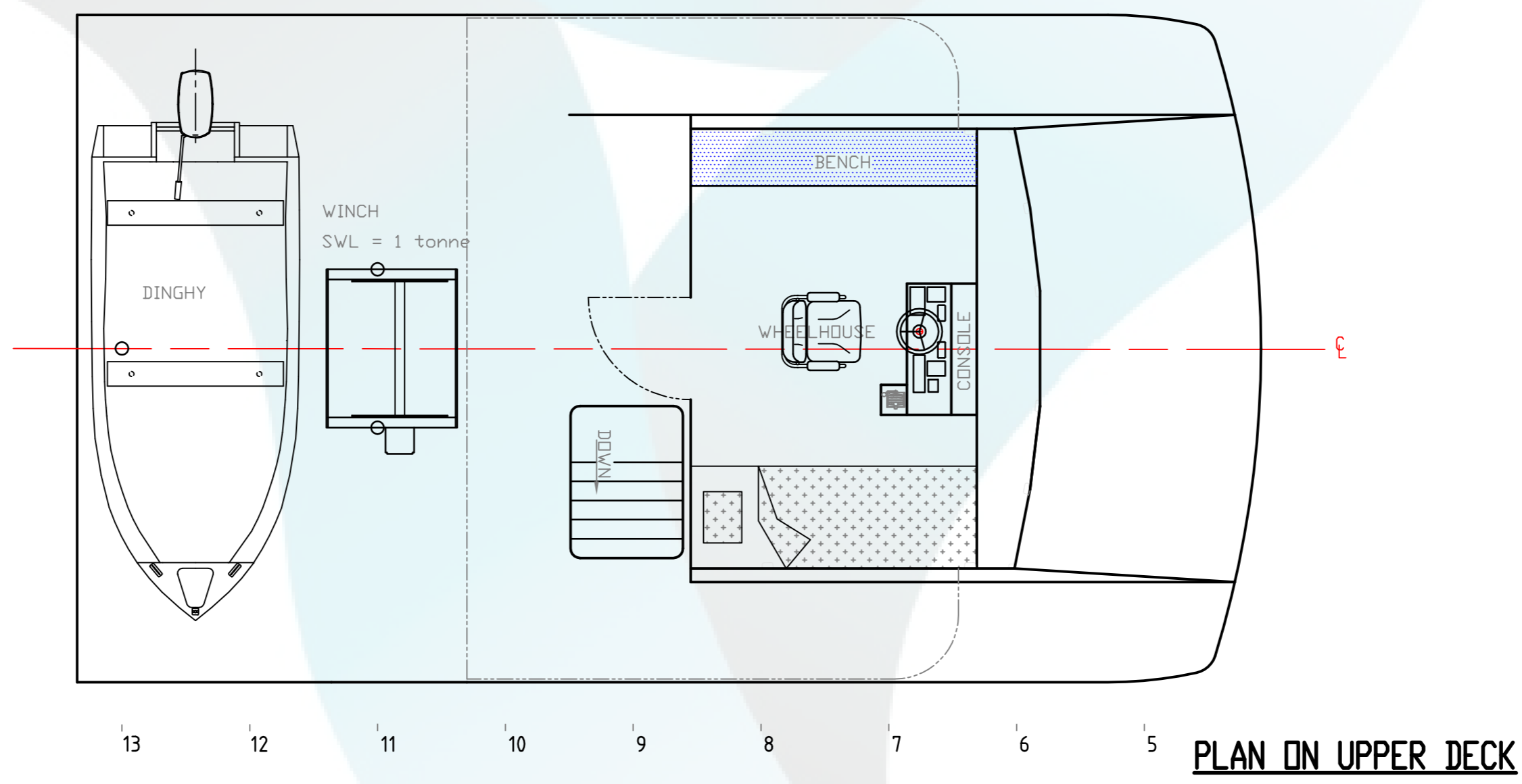
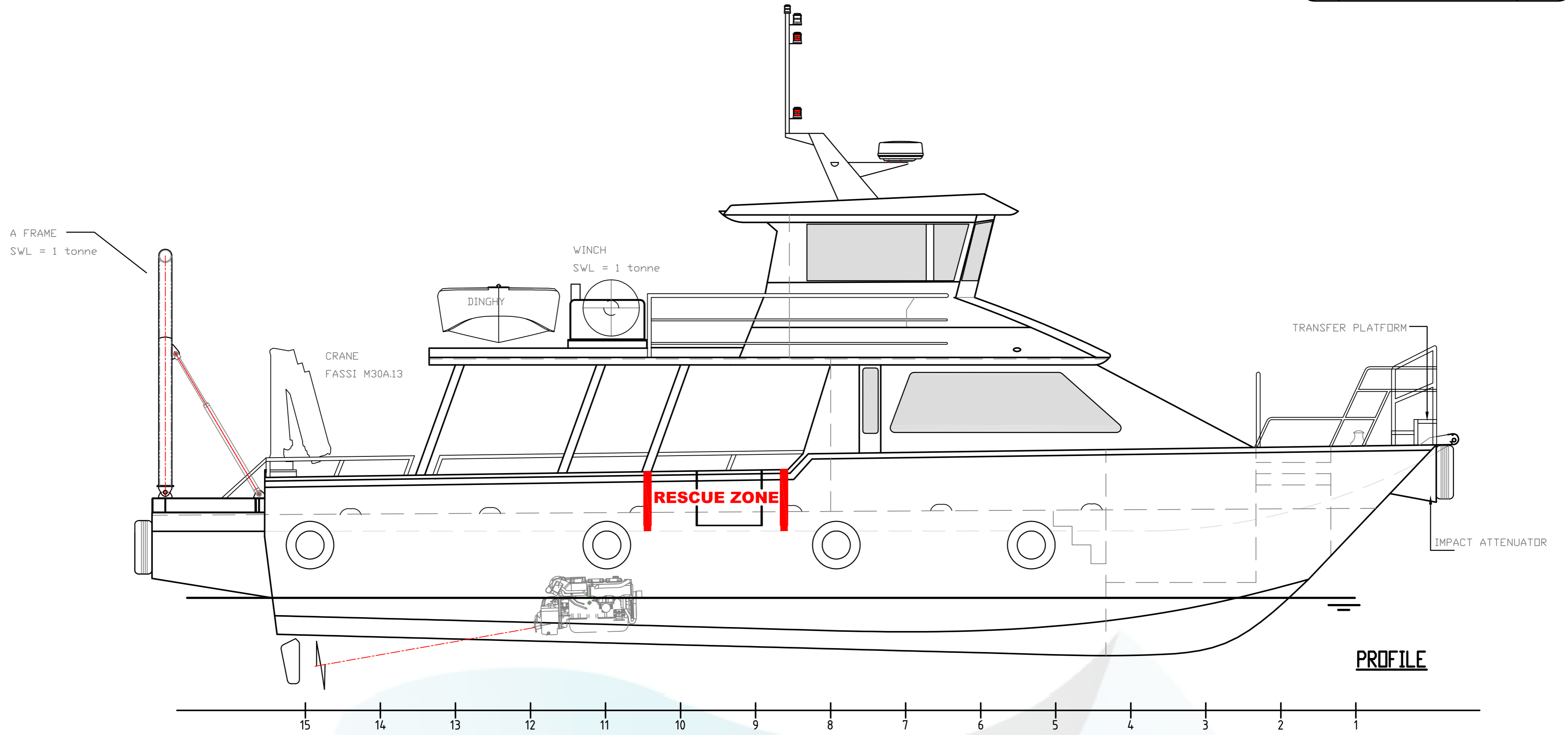
PH: +61 7 4035 6510

www.tayloredoffshore.com.au



DO NOT SCALE OFF THIS DRAWING
ALL DIMENSIONS ARE IN mm
REMOVE ALL BURRS & SHARP EDGES
IF IN DOUBT ALWAYS "ASK"

ISSUE	MODIFICATION/REFERENCE	DATE
A		JUNE 2014



PRINCIPAL PARTICULARS

LENGTH (OA)	17.20 M	PROPULSION	TWIN PROPELLERS
BEAM (MAX)	5.40 M	DESIGN SPEED	14 KNOTS (MAX)
DRAFT (DESIGN)	1.00 M	FUEL CAPACITY	3200 LITRES
CLASS	1B 23+2	MAIN ENGINES	TWIN YANMAR 6LY 2A 440 HP

Customer: TAYLORED OFFSHORE SERVICES

Project: 17.20M OFFSHORE UTILITY VESSEL

Title: DEEPSTAR GENERAL ARRANGEMENT

This drawing and all the information contained herein is the property of Oceantech Design. It must not be copied or reproduced in any form or for manufacture or any other purpose without written permission from Oceantech Design and must be returned on demand.



18-20 SHIPWRIGHT ROAD
LARGES NORTH SA 5014
PH: +61 8 8242 0336
FAX: +61 8 8242 0335
ENQUIRIES@OCEANTECH.COM.AU
WWW.OCEANTECH.COM.AU

General Tolerances	DRN:	SRL	Drawing No.	Issue
LIN.			472-06	A
ANG.	Scale	1:40	Sheet No.	1 OF 1